

What is Child Sexual Abuse?

Sexual abuse is when a child or young person is groomed, pressurised, forced, tricked or coerced into taking part in any kind of sexual activity with an adult or another young person.

This can include kissing, unwanted touching, showing of pornography, intercourse or oral sex. It can happen to anyone - girls and boys. It is not the child's or young person's fault.

What is Child Sexual Exploitation?

Another form of sexual abuse is child sexual exploitation. Sometimes a child or young person is groomed by others, who initially give them gifts and make them feel 'special'. Gifts include mobile phones, money, drugs, alcohol, cigarettes, being taken out for meals etc.

The person gives the child/young person affection and says they 'love' them. However 'love' soon turns to hurt and exploitation and the young person is forced into unwanted sexual activity such as rape, prostitution or human trafficking including slavery.

What is an Independent Sexual Violence Advisor (ISVA)?

An ISVA is a trained specialist who provides confidential advice and support to both girls and boys, under the age of 18 years, who are or have been victims of sexual abuse or sexual exploitation.

They will help the child/young person to come to terms with what has happened.

They will explain what options are available. We are not part of the police or courts which means we are totally independent.



How can the ISVA service help the child/young person?

- We will emphasise that it is not the child/young person's fault - they are not to blame
- We will discuss how they feel
- We will try to address any particular anxieties and concerns
- We will make sure that support is available in school or college
- We will liaise with other agencies to obtain counselling
- We will discuss any sexual health issues
- We will also support parents/carers in order to support their child
- We will assist with any interviews with the police and attend court, if necessary
- Our service is confidential

Please act now if you think a child is at risk of being sexually abused or exploited.



Possible warning signs

- Lack of self-esteem or confidence
- Appears isolated or withdrawn
- Regressing to younger behaviour patterns
- Change in mood or behaviour
- Truancy from school
- Lack of trust or fear of someone they know well
- New money, clothes, jewellery, mobiles that they can't explain
- A relationship with an older boyfriend or man
- Staying out overnight
- Medical problems such as urinary infections or pain in the genital area
- Self-harm including anorexia

The Independent Sexual Violence Advisory Service is part of Preston Domestic Violence Services who provide specialist services to victims (women, men and children) of domestic violence/abuse and/or sexual violence.

Who to contact for advice and support?

Please call **01772 201501** to speak to our Independent Sexual Violence Advisors.

We are open Monday to Friday 9am-5pm. Outside these hours call the Helpline.

Or email: mail@preston-isva.org.uk

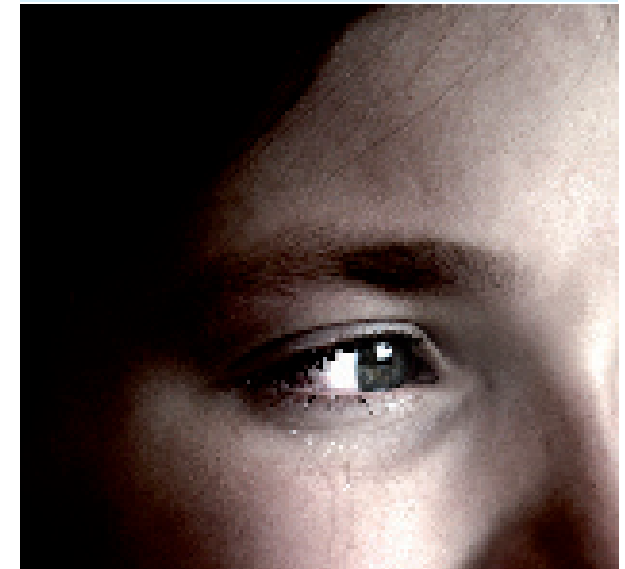
24 hour Helpline
01772 201 601

Alternatively contact the local multi-agency CSE Team, based at Preston Police. Where necessary the Preston ISVA Service works closely with the police to support victims and help to bring perpetrators to justice. The team can be contacted on 01772 209 122 or text 66247 and begin your message with DETER.

Please visit our website for more information:
www.preston-isva.org.uk

Preston Sexual Violence Advisory Service

Support for children



How to get help if you think a child is being sexually abused or exploited



Charity No. 1061953 - Company No. 3289949
Registered Office: 10 Oakham Court, Preston PR1 3XP

